



St. Clair County, Michigan 2024 Report Card

While grading a limited number of indicators, these report cards provide fact-based information and represent key areas of importance and local trends impacting our economy, environment and society. While several indicators included in this report can be interpreted in various ways, the data can be used as an effective public relation tool for informing people about concerns and accomplishments in certain areas and can be used to prompt action.



The indicators help to explain the "why" of community approaches as they are used by governments, businesses and organizations to set goals and measure progress towards achieving them. The indicators presented are intended to raise awareness of sustainability in the county, improve our ability to prioritize resources and make sound decisions for the benefit of our future.

PEOPLE



\$66,887
Median Household Income
(2022)

6.4% increase since 2021



160,257

Total Population (2022)

adding 190 people since 2021, an 0.01% increase

11% are 25 to 34 years old (2022)



146 people added since 2021, an 0.8% increase

19,160 faced food insecurity in 2021, decreasing by

-19.4%



4,610 less people than in 2020.



12.5%

Families Receiving Earned Income Tax Credit (2022)

-5.2% decrease since 2021



1,308

Property crimes (2022)

5.9% increase from 2021

455

Violent crimes (2022)

-5.4% decrease from 2021



The 2023 high school dropout rate was

6.1%

0.8% increase since 2022



6.8%

of teens (16-19) were not working or in school (2022)

0.2% increase since 2022

The prevalence of obesity among adults in 2021 was

35.6%

-1.8% decline since 2020



19,377

Student enrollment (2024)



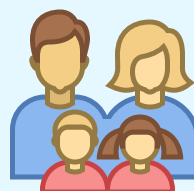
326 students less for a -1.7% drop since 2023



2.4%

of students were homeless in 2021

a 0.1% increase since 2022



\$722

Average Monthly Cost of Childcare (2022)

-2.2% decrease since 2021

How are we doing?

BETTER

SAME

(<0.25% change)

WORSE

Of all 2023 high school seniors,



82.7%

graduated on time

0.6% increase since 2022

and

17.3%

did not graduate on time

-0.6% decrease since 2022

PLACE



\$10.1 B

State Equalized Value (2023)

10.6% increase from 2022



248

2023 Overall Air Quality Index (AQI) Value

13



Healthy Days Posing Little to No Risk (AQI under 50)

30 day decrease from 2022

Unhealthy Days Posing a Health Risk (AQI 101+)

11 day increase from 2022

101

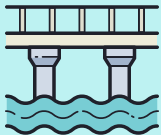
Acceptable Air Quality Days Posing Moderate Risk (AQI 51 to 100)

22 day increase from 2022

Federal Transportation Funds Spent (2023)

\$44.3 M

\$8.2 M increase since 2022



25



Days with Extreme Heat Heat Index Above 90 (2022)

5 day decrease since 2021

2



Days with Extreme Precipitation 1"+ Rainfall (2022)

decreased by 5 days from 2021



40.3%

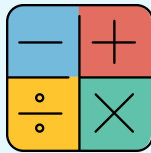
3 & 4 Year Olds in Preschool (2022)

0.3% increase since 2021

8th Graders Proficient or Advanced in Math

38.3%

5.1% increase since 2022



Cost Burdened* Households



6,406

Renter-Occupied (2022)

91 added since 2021 for a 1.4% increase

10,249

Owner-Occupied (2022)

Adding 696 since 2021 for a 7.3% increase

3,737

Traffic Crashes (2022)

3.1% increase since 2021



42.7%

Workers 16+ with 30+ Minute Commute Time & Not Working From Home (2022)

0.6% increase since 2022

How are we doing?

BETTER

SAME

(<0.25% change)

WORSE



270

Building Permits Issued (2023)

-38.1% decrease since 2022

82

Demolitions (2023)

Increased by 20.6% since 2021



*Households spending more than 30% of their income on housing

PROSPERITY



71,933
Housing Units (2022)

0.4% increase since 2021



\$197,300

Median Home Value (2021)

15.9% increase since 2021

\$982

Median Monthly Gross Rent (2022)

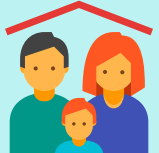
10% increase from 2021



18,147

ALICE Households* (2023)

9.8% increase from 2021



\$67,881

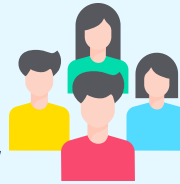
Average Annual Wage (2022)

5.6% increase since 2021

11.8%

Population Below Poverty (2022)

-0.1% decrease from 2021



8,559

Households received food stamps/SNAP** (2022)

2.5% increase since 2021



Industry Establishments (2022)

3,160

200 added since 2021, an 0.8% increase

Labor Force (2022)

79,382



210 added since 2021 for an 0.3% increase

Labor Force Participation Rate (2022)

60.2%

-0.1% decline since 2021



83,581 residents were of prime working age (25-64) in 2022 with



75.9%

in the Labor Force

0.3% increase since 2021

And, of those, **22.6%** were employed WITH a Bachelor's degree or higher level of educational attainment.



0.9% increase from 2021

Population 25+ with Associate's Degree or Higher (2022)



37,030

1.3% increase since 2021

How are we doing?

BETTER

SAME

(<0.25% change)

WORSE



73,964
Total Employment (2022)

a 0.5% increase since 2021

6.7%

Unemployment Rate (2022)

-0.2% decrease since 2022



*ALICE (Asset Limited, Income Constrained, Employed) Households earn more than Federal poverty level, but less than basic cost of living for the county

**Supplemental Nutrition Assistance Program (SNAP)